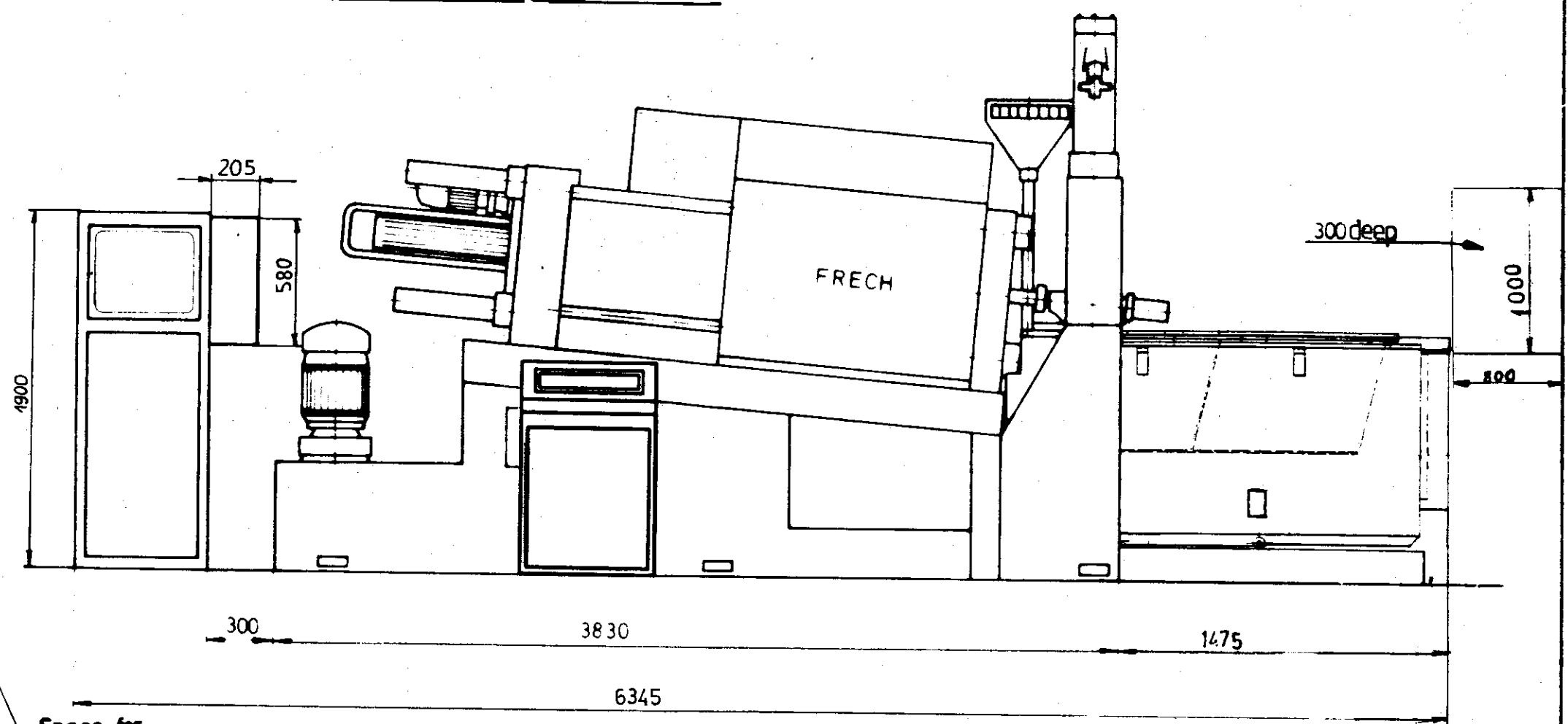
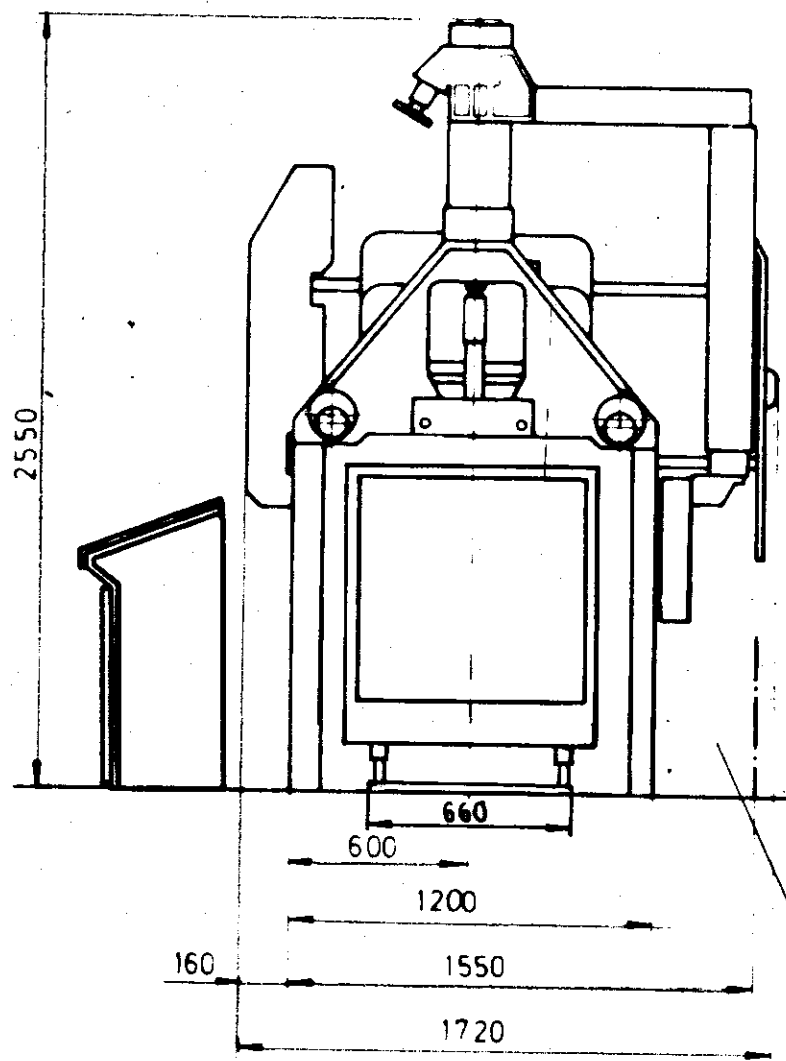


Required fuel for crucible heating	
Fuel	Connected load
Electric	63 kW

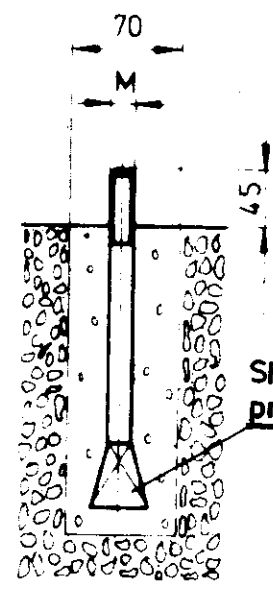
Foundation load approx 80 kN



Space for hydr. device

**Symbols**

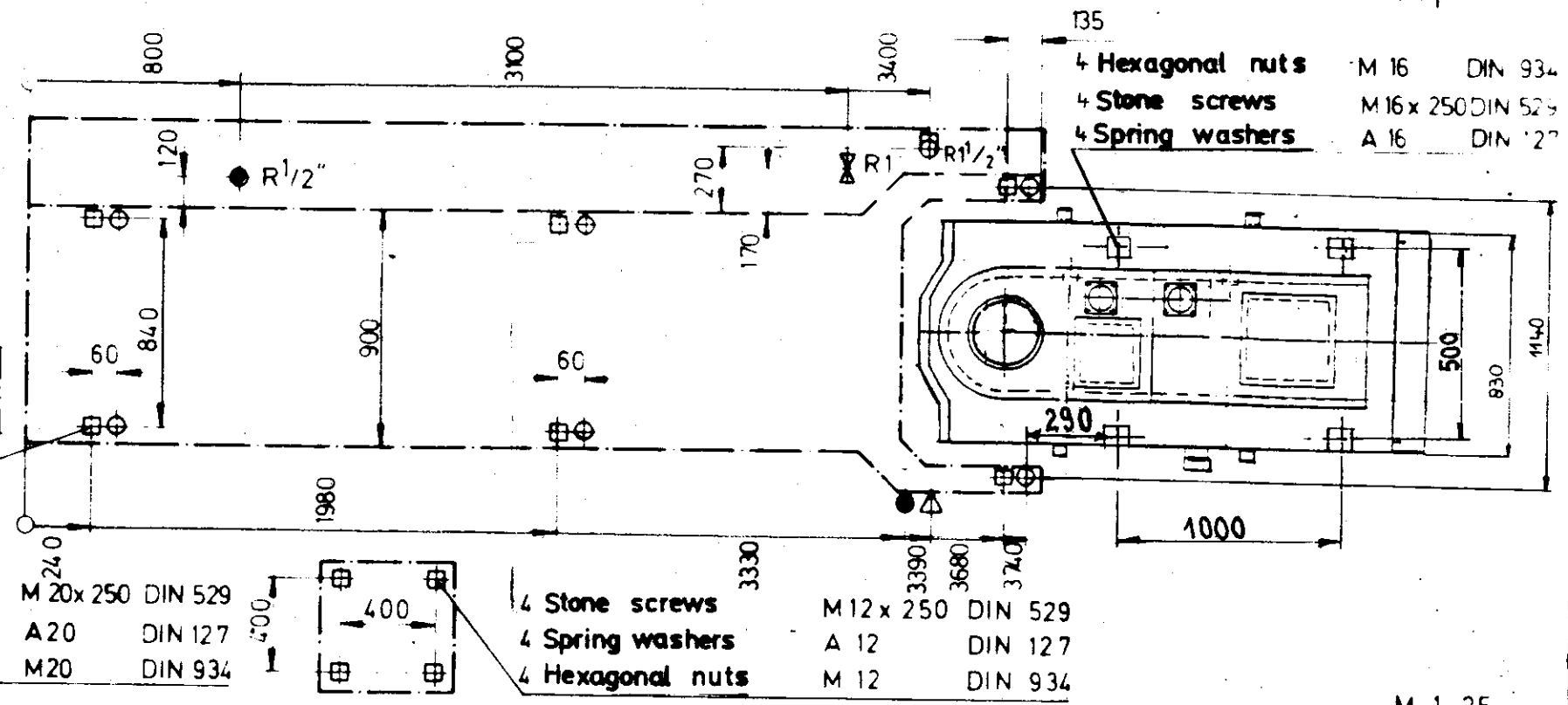
- Stone screw
- Levelling screw
- ⊗ Connection of cooling water
- ⊕ Connection - waste water
- Connection of compressed air
- △ Connection of heating gas



Shape free to producer

- 6 Stone screws M 20x 250 DIN 529
- 6 Spring washers A 20 DIN 127
- 6 Hexagonal nuts M 20 DIN 934

22kVA Connected load



- 4 Hexagonal nuts M 16 DIN 934
- 4 Stone screws M 16x 250 DIN 529
- 4 Spring washers A 16 DIN 127

- 4 Stone screws M 12x 250 DIN 529
- 4 Spring washers A 12 DIN 127
- 4 Hexagonal nuts M 12 DIN 934

M 1 25

**FRECH**

Foundation plan with two chamber furnace DAM 200-S

0.003.198.43  
deutsch. engl. franz.